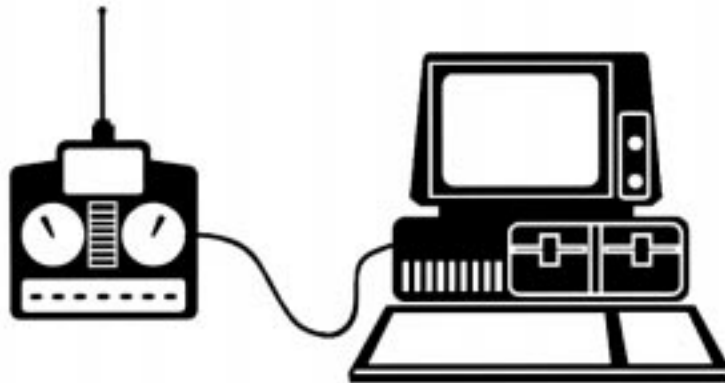

DATA SAFE

PC INTERFACE SYSTEM



JR

Developed by
The Topper Company LLC

Table of Contents

Description	2
System Requirements	3
DataSafe Features	3
Installing the Hardware	4
Installing the Software	4
Starting the DataSafe Program	8
Manually Setting the Com Port	9
Receiving Files from the Transmitter	10
JR Transmitter Data Transfer Procedures: Transmitting Programs	12
PCM10S, 10SX, 10SxII, 10X	12
XP8103	14
R-1	15
Downloading Files to the Transmitter	16
JR Transmitter Data Transfer Procedures: Receiving Programs	18
PCM10S, 10SX, 10SxII, 10X	18
XP8103	20
R-1	21
Copying Files to Floppy Disk	23
Retrieving Files from Floppy Disk	25
Deleting Files from View	27
Warranty and Service Information	28

Date: _____
Serial Number: _____

Description

The JR DataSafe is an advanced storage system designed for use with the JR R-1, JR XP8103 and 10 Series (except PCM10) family of transmitters. The system consists of a DataSafe interface, DataSafe software, your transmitter and a desktop or laptop PC running Windows '95®, '98® or Windows NT®.

DataSafe is designed to completely keep track of all transmitter data for all models. Storing the information on the PC's hard disk accomplishes this. This storage is achieved by setting the transmitter to "Transfer" Mode and pressing two keys on the PC. You can store an infinite amount of model data on the PC (limited by hard disk space only).

You cannot accidentally overwrite any file in the DataSafe system. After each day of flying, just plug in and save. This can even be done at the field if you have a laptop PC. If the file is already stored, DataSafe checks to see if the file is exactly like the previous one. If they are different, the system automatically stores it. If they are the same, the system gives you the chance to store it with the current date and time, or to not store it at all.

You can download any stored file to the transmitter with a few keystrokes. This is a very simple procedure which allows you to experiment without the risk of violating your current transmitter programs. You may find the DataSafe so easy to use that you use it instead of your radio's Data Transfer function. Plus, DataSafe protects against overwriting the wrong model program. In addition, the DataSafe provides protection against Lithium battery failure induced memory loss, as you will always have duplicate programs stored with the DataSafe.

The DataSafe files are very small and can be e-mailed anywhere. You can exchange model setups with other pilots anywhere in the world via the Internet. You can even make extra copies on floppy disks for mailing purposes, or for added security.

System Requirements

- PC equipped with Windows '95®, '98® or NT®
- 2M available disk space
- One free serial port
- Mouse (optional)
- 3½" floppy disk-drive

DataSafe Features

- All transmitter data can be saved for R-1, XP8103, and 10 Series (except PCM10) models.
- Data is organized by:
 - a. Transmitter type
 - b. Model type
 - c. Transmitter model name
 - d. Transmitter model number
 - e. Date
 - f. Time
- Data can be restored to the transmitter.
- Files can be easily stored on floppy disks.
- Files can be e-mailed.
- Data cannot accidentally be erased by the DataSafe program.
- Data can be archived.
- Descriptions and setup notes can be added to model files to help identify specific models and setups.
- Information can be saved often without duplication.
- Little computer knowledge is required of user.
- Minimal disk space is required.
- Data loss due to lithium battery failure is eliminated.
- Programs can be sent to Horizon Service for programming diagnostics and trouble shooting.
- DataSafe module is very small and light. It can be stored in a transmitter case for in-field use.
- No external power or batteries are required.
- Data is checked for integrity before being sent to the transmitter.
- Data can be stored before your transmitter is sent to a service center.

Installing the Hardware

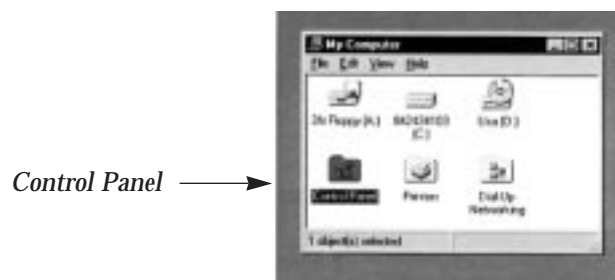
1. With your computer off, install the DataSafe interface into a serial port. If your port is a 9-pin, an optional 25-to-9 pin adaptor will be necessary. (Radio Shack #26-269 or equivalent)
2. Plug the JR trainer cord (available separately; order JRPA130) into the DataSafe interface.
3. Plug the opposite end of the trainer cord into the DSC transmitter port.

Installing the Software

1. To install the DataSafe software, double click on the My Computer icon on the Windows main screen.



2. Double click on the Control Panel folder.



3. Double click the Add/Remove Programs icon.



← *Add/Remove Programs*

4. From the Add/Remove Programs Properties dialog box, click on the Install button.



← *Install*

5. Insert DataSafe Installation Disk #1 and click Next.



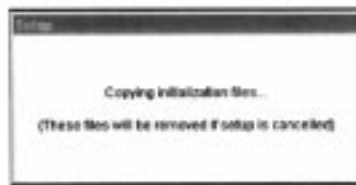
Next →

6. From the Run Installation Program dialog box, click Finish.



Finish → ↑

7. As the files are loading, you should see the following message:

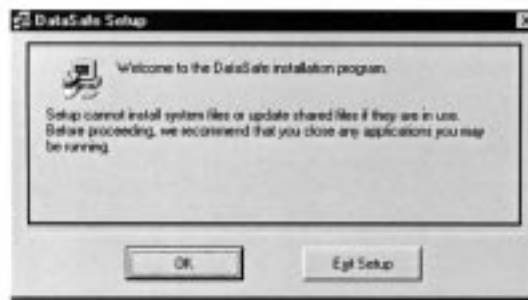


8. When the first set of files is finished loading, the following message will appear:



OK → ↑

9. Insert DataSafe Installation Disk #2 and click OK. When the DataSafe Setup dialog box appears, click OK if all programs are closed.



OK → ↑

10. When the following screen appears, click on the computer icon. Please do not change the directory name or path.



11. When the files are finished loading, the following message will appear:



OK → ↑

The software installation is now complete. The DataSafe system is now ready to save data. Click on OK.

Starting the DataSafe Program

After you have installed the DataSafe software and hardware, you are now able to run the DataSafe program.

Accessing the DataSafe Program

1. Access Windows.
2. Click Start from the Windows Menu Screen.
3. Click programs.
4. Click the DataSafe icon.
5. If the DataSafe module is installed in a serial port, the program will automatically search and find the correct port.
6. When the port is found, the DataSafe main screen will appear.



If this button appears green, the interface is present.

If this button appears red, the interface is absent. Please refer to the Com Port Section on page 9 for further information.

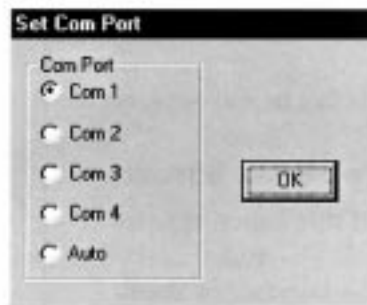
Manually Setting the Com Port

1. If the program is unable to automatically detect a port, you will have to select it manually. From the main screen, click Set Com Port.



Set
Com Port ———→

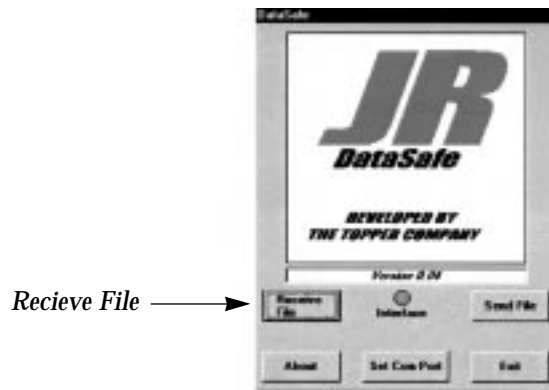
2. Click the button beside the correct port and then click OK.



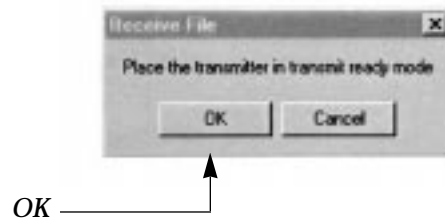
← OK

Receiving Files from the Transmitter

1. To receive data from the transmitter, click the Receive File button.



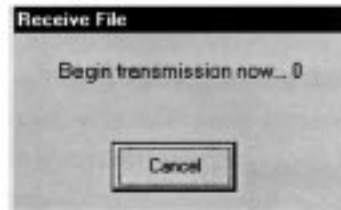
2. When the following Receive File screen appears, place the transmitter in Data Transfer Mode before clicking OK. Please refer to the JR Transmitter Data Transfer Section of this manual (page 12) for more information.



3. After you click OK in the Receive File screen, the port will initialize.



4. After the port initializes, the following screen will appear:



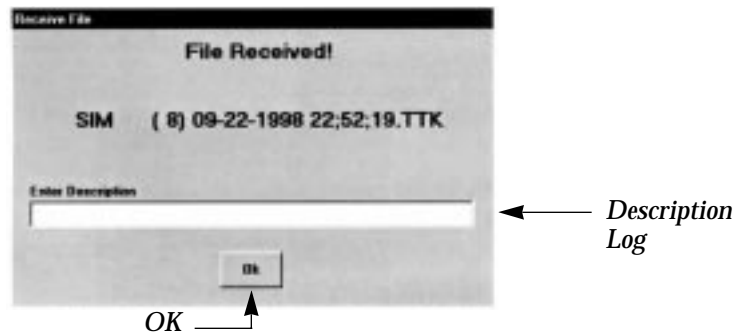
5. Press the appropriate key on the transmitter. Please refer to the JR Transmitter Data Transfer Section of this manual (page 12) for information.

6. While the PC is accepting the data, the following screen appears:



If at any time you wish to cancel this function, simply click on the cancel button.

7. When the PC is finished accepting data, the following screen appears:



8. You may add a description to log and identify this model data. When completed, click on OK to save the data.

JR PCM10S, 10SX, 10SxII, 10X

Data Transfer: Transmitting Programs

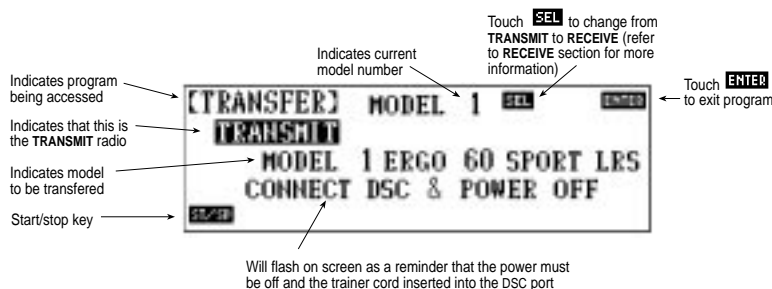
This section is applicable to all JR radios from the 10 series listed above. Please note that although the screen images may vary slightly due to the series of radio, or Air or Heli configurations, the transfer procedure is the same for all transmitters.

Transfer Procedure

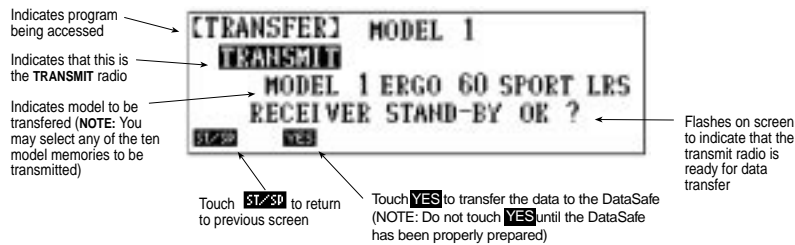
1. With the transmitter's power off, plug in the JR trainer cord (optional in some systems; order JRPA130) into the DSC port of the transmitter. The screen will appear as follows:



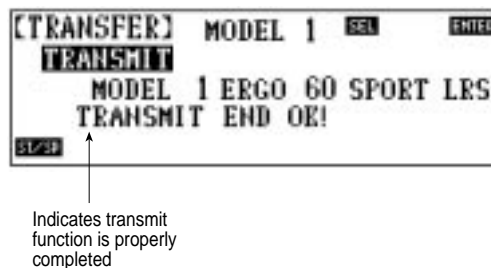
2. Enter Code 86 Data Transfer via code number or direct access method. The screen will appear as follows:



3. Touch the ST/SP key at this time. The transmit standby screen should now appear as follows:



4. Confirm that the Data Safe is in the “receive file” mode (page 10).
5. Next, press the YES key to start transmitting data. The transmitter will indicate “transmit end ok” indicating that the transfer has been completed successfully.



For further Data Transfer information, please refer to the Data Transfer section in your radio’s instruction manual.

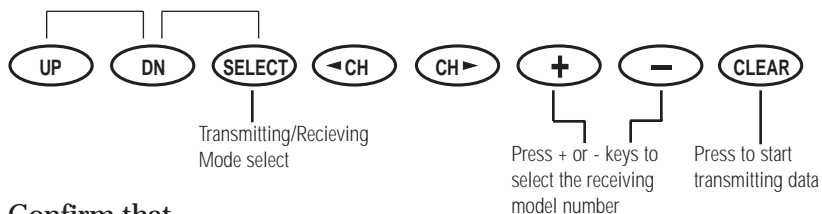
XP8103 Data Transfer: Transmitting Programs

Transfer Procedure

1. Select the model number to be transferred through the Model Select function. (See page 28 of the XP8103 instruction manual for information on the Model Select function.)
2. With the 8103's power switch **off**, press the UP and DN keys simultaneously while inserting the trainer cord into the DSC jack of the transmitter.

3. Select the Transfer function by pressing the UP or DN key. Then simultaneously press the UP and DN keys to enter the Transfer function.

```
[TRANSFER]
  ↳TRANSMIT
    Start=[CLR]
  MODEL 1
  Receiver 0%
    stand-by ?
```



4. Confirm that the Data Safe is in the "Receive File" Mode.
5. Press the CLR key to start transmitting data. The transmitter will indicate [End Ok!] when the transmitting is complete.

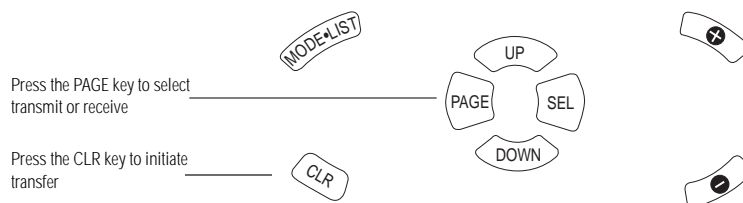
For further data transfer information, please refer to the Data Transfer Section of the XP-8103 manual, page 32.

R-1 Data Transfer: Transmitting Programs

Transfer Procedure

1. With the R-1's power **off**, press and hold the MODE LIST key while plugging the trainer cord (available separately; order JRPA130) in the DSC jack. Next, select the transfer screen.
2. In System Mode, access the Transfer function by moving the cursor to TRANSFER and pressing the MODE LIST key.

```
[TRANSFER]
▶TRANSMIT Start=[CLR]
MODEL 1
Receiver 0%
stand-by ?
```

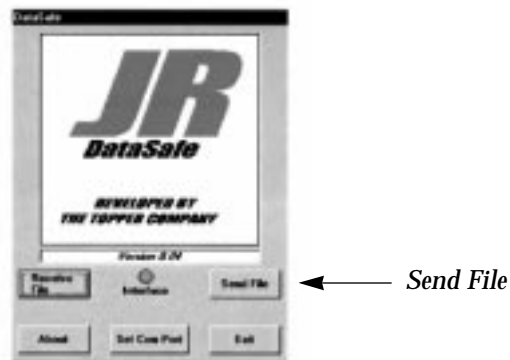


3. Check to insure that the screen is in Transmit Mode.
4. Confirm that the Data Safe is in the "Receive File" Mode (page 10).
5. Press the CLR key to start transmitting data.

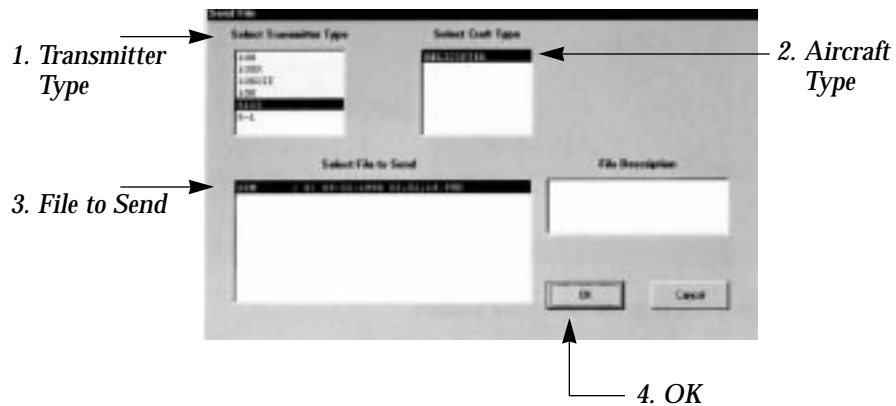
For further data transfer information, please refer to the Transfer Section of the R-1 manual, page 22.

Downloading Files to the Transmitter

1. To download data to the transmitter, click on Send File.



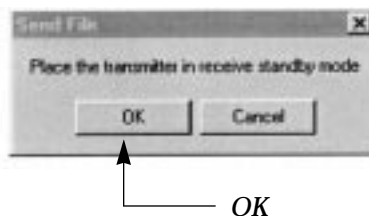
2. When the following screen appears:
 - 1) Click on the correct transmitter type
 - 2) Click on the correct aircraft type
 - 3) Click the file to send
 - 4) Click OK



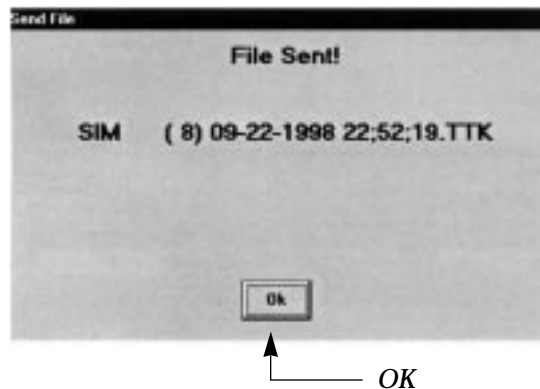
- The port will initialize.



- When the following Send File screen appears, place the transmitter in the Receive Stand-by Mode before clicking OK. Please refer to the Data Transfer: Receiving Programs Section on page 18 of this manual for further information.



- When the PC has finished sending the data, the following screen appears:



- The transmitter screen should display "END OK." Click on OK to complete.

Important:

Be sure to check all model controls before using.

JR PCM10S, 10SX, 10SxII, 10X Data Transfer: Receiving Programs

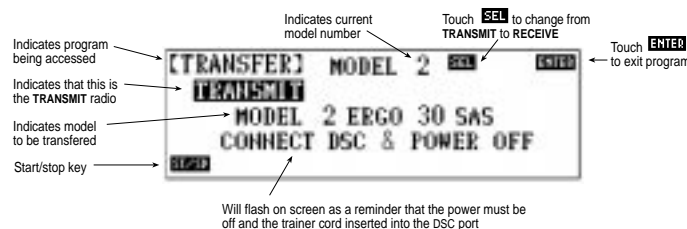
This section is applicable to all JR radios from the 10 series listed above. Please note that although the screen images may vary slightly due to the series of radio, or Air or Heli configurations, the transfer procedure is the same for all transmitters.

Transfer Procedure

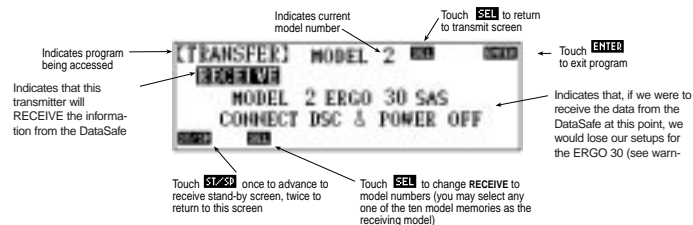
1. With the transmitter power off, plug in the JR trainer cord (available separately; order JRPA130) into the DSC port of the transmitter. The screen will appear as follows:



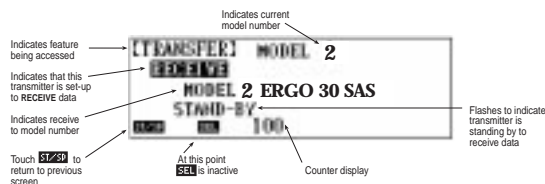
2. Enter Code 86 Data Transfer via code number or direct access method. The screen will appear as follows:



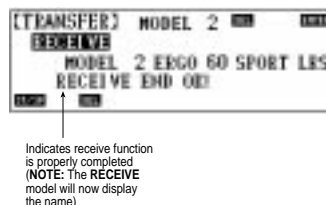
3. Touch the SEL key in the upper right hand side of the LCD screen. Your radio will change from the transmit to the receive mode. The screen should appear as follows:



4. Touch the ST/SP key at this time. The receive standby screen should now appear as follows:



5. Confirm that the DataSafe is in the “send file” mode (page 17). Next, click on the “OK” button shown on the DataSafe screen to transmit the data. **Note: Steps 1–4 of the DataSafe file download section (pages 16–17) must be performed prior to this action.**
6. “Standby” will disappear from the screen and at the same time 100 will rapidly count down until it reaches 0. Once it reaches 0, the screen will immediately change once again to read “END OK!”, indicating that the transfer has been successful. If an “error” message is received, it means that the data was not received properly, and you will need to retry using the above procedures.

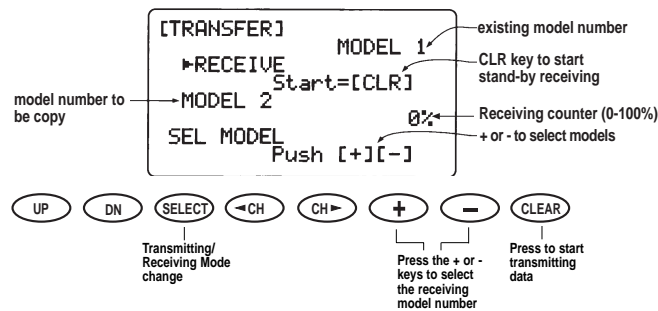


For further Data Transfer information, please refer to the Data Transfer Section of your radio’s instruction manual.

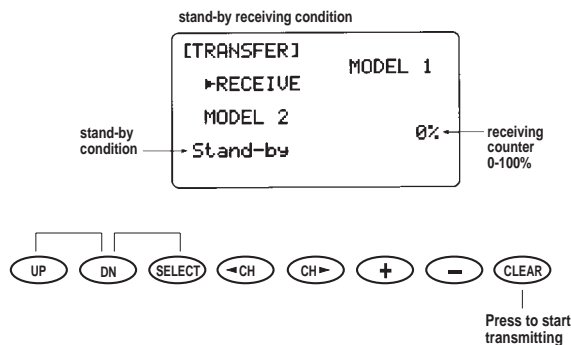
XP8103 Data Transfer: Receiving Programs

Transfer Procedure

1. With the 8103's power switch **off**, press the UP and DN keys simultaneously while inserting the trainer cord into the DSC jack of the transmitter.



2. Select the Transfer function by pressing the UP or DN key; then simultaneously press the UP and DN keys to enter the Transfer function.
3. Press the SEL key to select the receive mode. Next, press the + or - keys to select the desired model number to store the data into.
4. Press the CLR key to prepare the transmitter to receive data. "Stand-by" will appear on the screen, indicating that the transmitter is now ready.



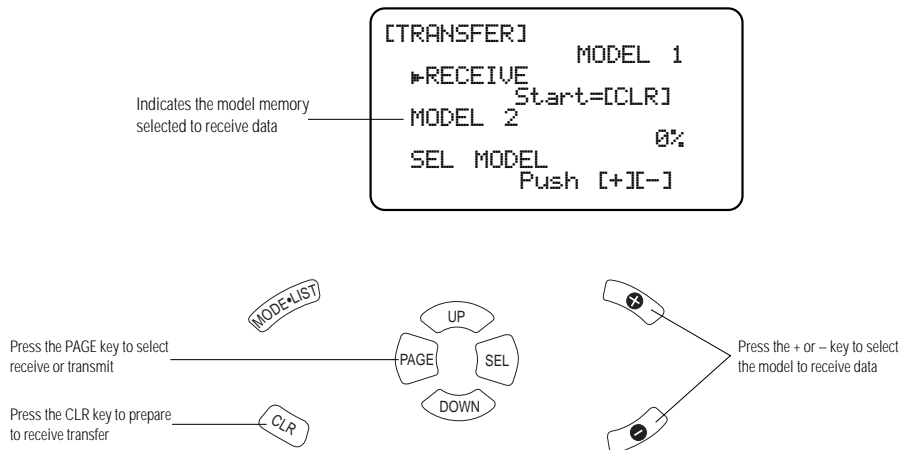
5. Place the DataSafe in the “send file” mode and click on the “OK” button to transmit the data. **Note: Steps 1–4 of the DataSafe file download section (pages 16–17) must be performed prior to this action.**
6. “End ok!” will appear on the transmitter screen if the transfer has been completed successfully. An error message means that the data was not received properly, and you will need to retry using the above procedures.

For further Data Transfer information, please refer to the Transfer Section of the XP8013 manual, page 32.

R-1 Data Transfer: Receiving Programs

Transfer Procedure

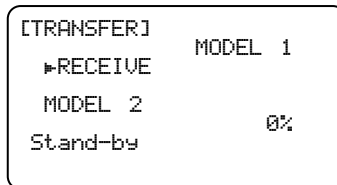
1. With the power off, press and hold the MODE LIST key while plugging in the Trainer Cord (available separately; order JRPA130) into the DSC Jack. Next, select the Transfer Screen.



2. In System Mode, access the Transfer function by moving the cursor to Transfer and pressing the MODE LIST key.
3. Press the PAGE key to select the Receive Mode. Next, press the + or - key to select the desired model to which that data will be stored.
4. Press the CLR key to prepare the transmitter to receive data. "Stand-by" will appear on the screen.
5. Place the DataSafe in the "send file" Mode and click on "OK" to transmit the data.

Note: Steps 1–4 of the DataSafe File Download Section (pages 16–17) must be performed prior to this action.

6. "End Ok!" will appear on the transmitter screen if the transfer has been completed successfully. An error message means that the data was not received properly, and you will need to retry using the above procedures.

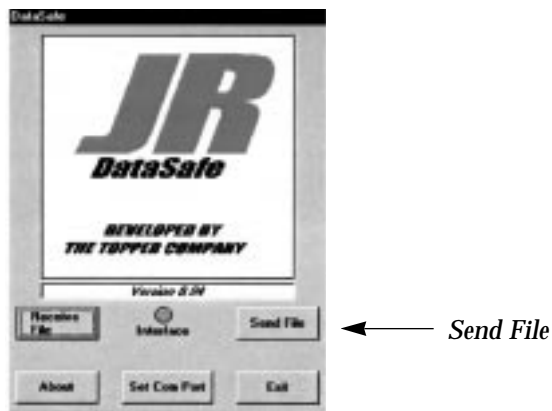


A screenshot of a transmitter screen with a black border. The text on the screen is as follows:
[TRANSFER] MODEL 1
 ▶RECEIVE
 MODEL 2 0%
 Stand-by

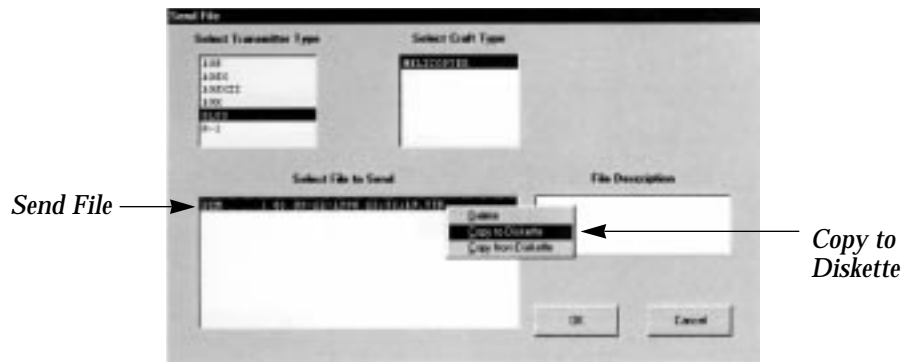
For further data transfer information, please refer to the Data Transfer Section of the R-1 manual, pages 22–23.

Copying Files to Floppy Disk

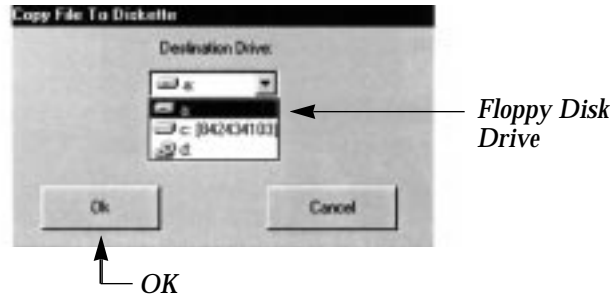
1. From the main screen, click on Send File.



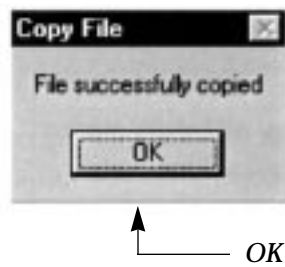
2. Select the file you want to copy and right click with the mouse. From the menu, select Copy to Diskette.



- From the pull-down menu, select the floppy disk drive and click OK.

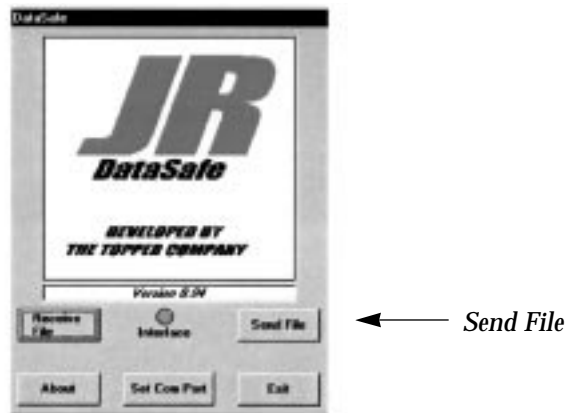


- When the file is copied to your floppy disk, the following screen appears. Click on OK to complete.

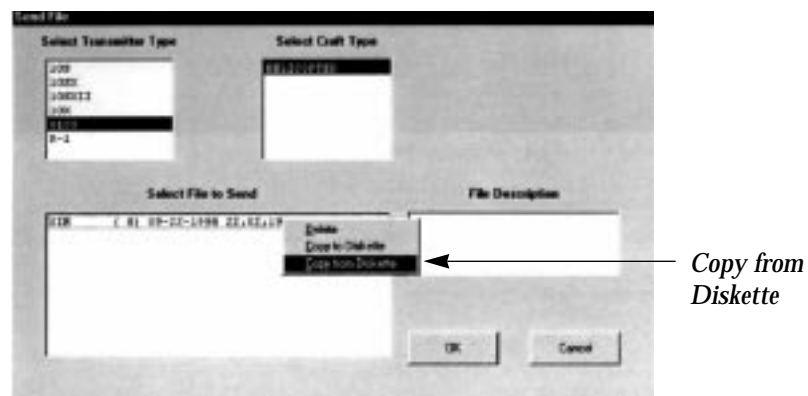


Retrieving Files from Floppy Disk

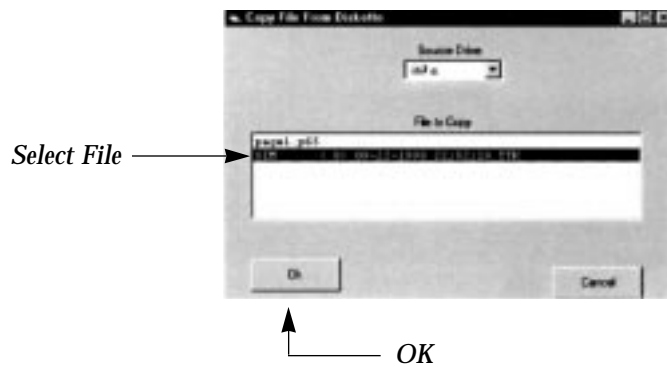
1. From the main screen, click on Send File.



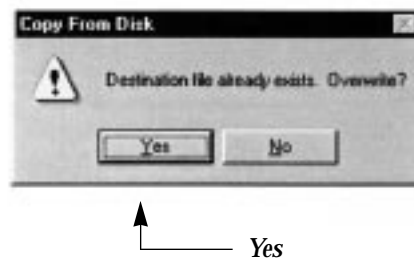
2. With the mouse pointer inside the “Select File to Send” box, right click with the mouse and select Copy from Diskette.



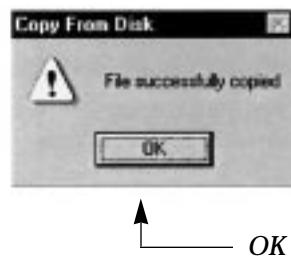
3. Select the file you want to retrieve and click OK.



4. The following warning will appear if the same file name already exists on your PC. If you wish to overwrite, click on Yes.

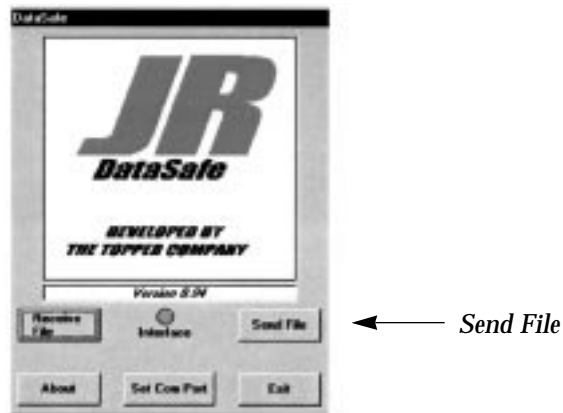


5. When the file is copied from your floppy disk, the following screen appears. Click on OK to complete.

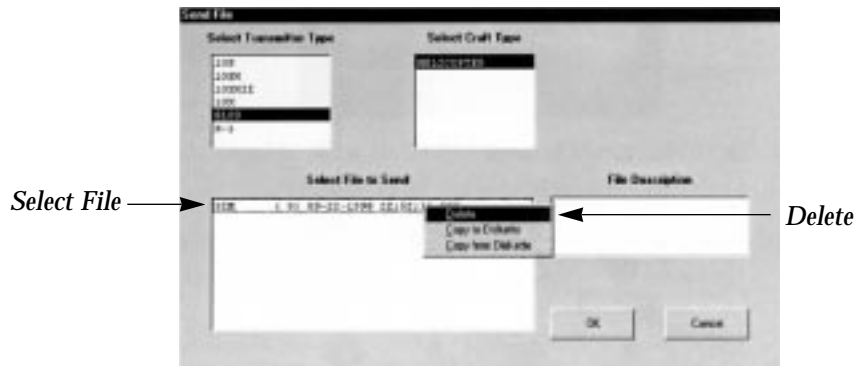


Deleting Files from View

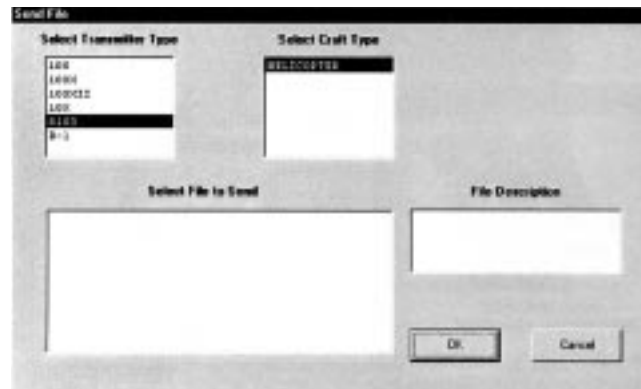
1. From the main screen, click on Send File.



2. Select the file you want to delete and right click. From the menu, select Delete.



3. When the file name disappears from view, click OK.



↑
OK

Warranty and Service Information

Your new equipment is warranted to the original purchaser against manufacturer defects in material and workmanship for one year from the date of purchase. During this period, Horizon Service Center will repair or replace, at our discretion and at no cost to the purchaser, any component that is found to be factory defective. This warranty is limited to the original purchaser of the unit and is not transferable.

This warranty does not apply to any unit which has been improperly installed, mishandled, or abused, or to any unit which has been repaired or altered by any unauthorized agencies. Under no circumstances will the buyer be entitled to consequential or incidental damages. This limited warranty gives you specific legal rights; you also have other rights which may vary from state to state.

As with all fine electronic equipment, do not subject your unit to extreme temperatures, humidity or moisture. Do not leave it in direct sunlight for long periods of time.

In the event that your equipment needs service, please follow the instructions listed below:

1. Return your system components only.
2. Use the original carton/packaging (molded foam container), or equivalent, to ship your unit. Do not use the carton itself as a shipping carton; you should package the equipment carton within a sturdy shipping container using additional packing material to safeguard against damage during transit. **Include complete name and address information inside the carton, as well as clearly writing it on the outer label/return address area.** Ship your equipment fully insured and prepaid. Horizon Service Center is not responsible for any damage incurred during shipping.
3. Include detailed information explaining your operation of the equipment and problem(s) encountered. Provide an itemized list of equipment enclosed and identify any particular area/function which may better assist our technicians in addressing your concerns. Date your correspondence, and include your name, mailing address, and **a phone number where you can be reached during the business day.**
4. **Warranty Repairs.** To receive warranty service you must include a legible photocopy of your original dated sales receipt to verify your proof-of-purchase date. Providing that warranty conditions have been met, your radio will be repaired without charge.
5. **Normal Non-Warranty Repairs.** Should your repair cost exceed 50% of the retail purchase cost, you will be provided with an estimate advising you of your options.

Within your letter, advise us of the payment method you prefer to use. Horizon Service Center accepts VISA or MasterCard, or we can return the equipment C.O.D. cash-only. If you prefer to use a credit card, include your card number and expiration date.

Mail your system to:
Horizon Service Center
4105 Fieldstone Road
Champaign, Illinois 61822
(217) 355-9511

Free information and upgrades:
For additional information and free software upgrade downloads, visit our website at www.horizonhobby.com.



©1998 Horizon Hobby Distributors, Inc
Distributed Exclusively by Horizon Hobby Distributors, Champaign, IL 61822
www.horizonhobby.com
Developed by The Topper Company LLC